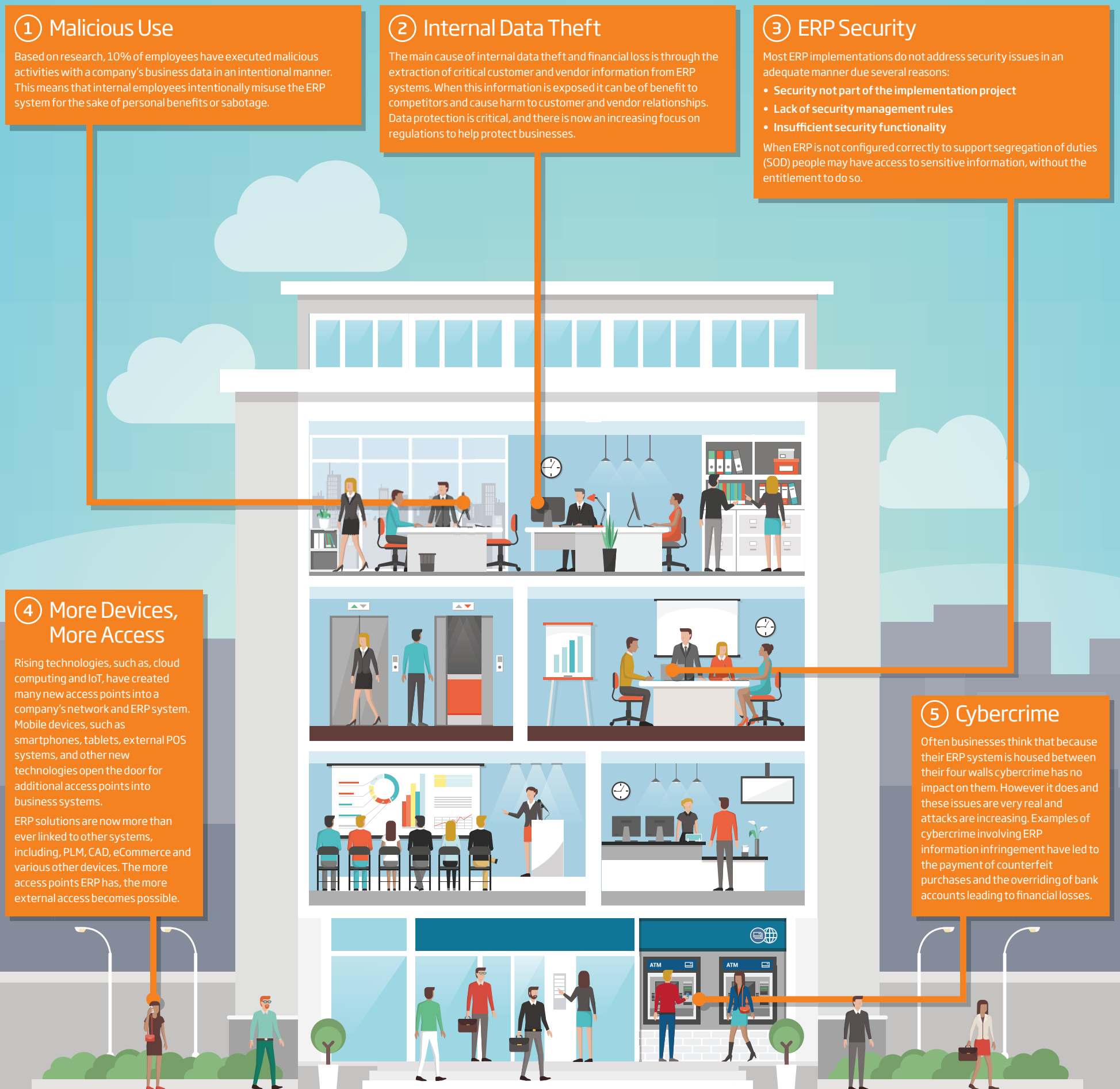


# 5 reasons your ERP data could be at risk

As ERP solutions become more complex, connect to more devices and create more information they have also become more susceptible to internal and external security risks. This in turn puts a business's most sensitive information, including sales orders, customer

and product details, and financial records, at risk of being accessed and used for malicious purposes. But research shows that many businesses are not aware of the problem or do not have adequate security in place to deal with such threats.



## How can Columbus help...

### Security Management for Microsoft Dynamics AX

Columbus offers solutions to make Microsoft Dynamics AX more secure. Columbus Dynamic Security Management simplifies the setup of roles and privileges, resulting in a sound segregation of duties. Dynamic Security Management records the required role-based functionality, and matches the recording to the security elements in Dynamics AX, simplifying the creation of end user security roles. Using Dynamic Security Management gives a business end to end insight into who is able to perform what in Microsoft Dynamics AX.

### Compliance and risk management

All businesses need to stay accountable when it comes to compliance and risk management. Being compliant means your internal flow of processes and information needs to be well documented. At Columbus, we have developed RapidValue, a business process management solution which can be utilized alongside Dynamic Security Management to help ensure your ERP system is in line with your business processes and organization model, adhering to the proper segregation of duties.

### Demand for secure, sustainable and transparent operations

Our next-generation security and auditing tools give you full insight in to who can access what data - also in a historical perspective. Dynamic Security Management logs all modifications in the assigned security roles and access to legal entities, as well as, other relevant data. Also database logging supports tracing on critical fields and tables.

At Columbus, we help our customers digitally **transform** their businesses and improve the value realization of their business application investments. We **mitigate** the inherent risks associated with implementing, upgrading and replacing legacy ERP systems. We **lead** our customers with best-practice consulting services we have refined over thousands of engagements. We take care of our customers and aspire to keep them for life.

To learn more about how Columbus can help you get the most out of your Microsoft solution, contact your local Columbus office.

**Columbus** | Once you know how...

[www.columbusglobal.com](http://www.columbusglobal.com)